



# **ACCOMMODATION AT NZCIS**

**48 SOMME ROAD  
UPPER HUTT**





## **NEW ZEALAND CAMPUS OF INNOVATION & SPORT (NZCIS) OFFERS A WIDE RANGE OF ACCOMMODATION FOR YOUR NEXT STAY!**

Set amongst park-like grounds we provide accommodation, conferencing, dining and a state of the art Performance Institute all in one location. For sports groups, business people, or visitors to the city we have everything you need on campus.

Our facilities range from king single rooms with shared facilities, ensuite rooms, studio apartments & one-bedroom apartments which makes NZCIS the perfect choice for business, training groups, sports teams or individuals.

We have a dining hall located within the Campus, where our on-site caterers offer delicious pre-booked meals for group bookings. Additionally, NZCIS also offers a range of conference and meeting rooms onsite with catering available which makes NZCIS the perfect eat, sleep & meet venue!

We are conveniently located across the road from Heretaunga Train Station - a 40 minute train ride from Wellington CBD or a 30 minute drive by car. Accessible public transport is available to and from Upper Hutt and Wellington. We also have car parking onsite (POA) and easy access for buses, shuttles and taxis.

NZCIS welcomes you to come and explore our campus. Our accommodation provides a stress free approach for your next group or team booking. Forget the hustle and bustle of the city and come and experience the suburban lifestyle of Upper Hutt





## **KING SINGLE ROOMS (SHARED FACILITIES)**



Across 2 adjacent blocks, we offer 7 wings consisting of 13 individual king single rooms with shared bathroom, lounge and kitchenette. Perfect for sports teams or larger travelling groups.

**These rooms are booked by wing only.**

### **FEATURES**

- **Beds:** 1 king single bed
- **Occupancy:** 1
- **Room size:** 9.5m<sup>2</sup>

### **TOTAL ROOMS TO HIRE:**

91 king single rooms

### **FACILITIES INCLUDE:**

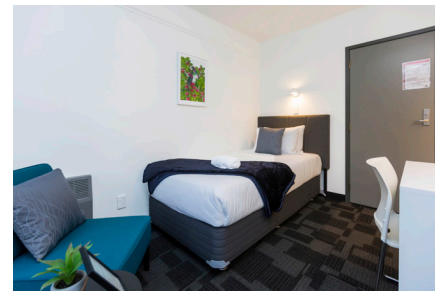
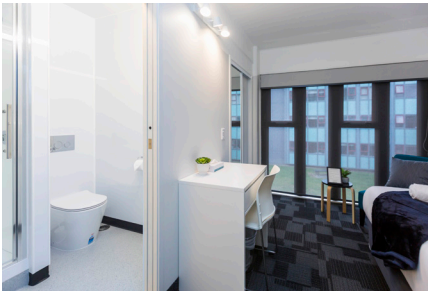
- Complimentary tea and coffee
- Freeview TV
- Free WiFi
- Fresh towel daily
- Linen provided

### **OTHER AMENITIES AVAILABLE:**

- On-site YMCA gym (membership additional cost)
- Card operated laundry
- On-site car parking (POA)

**\$1105 NZD INC GST  
PER NIGHT / PER WING**

# KING SINGLE ENSUITE ROOMS



The king single ensuite rooms are great for single-travellers, management/coaches who require separate accommodation, or anyone looking for a comfortable room of their own away from home.

With a king single bed and own ensuite, these rooms offer a private retreat from other groups.

Located on the same floor is a shared lounge and kitchenette with microwave and fridge.

## **FEATURES:**

- Beds: 1 king single bed
- Occupancy: 1
- Room size: 11.5m<sup>2</sup>

## **TOTAL ROOMS TO HIRE:**

7 x king single rooms available

## **FACILITIES INCLUDE:**

- Complimentary tea and coffee
- Freeview TV
- Free WiFi
- Room serviced daily
- Linen provided

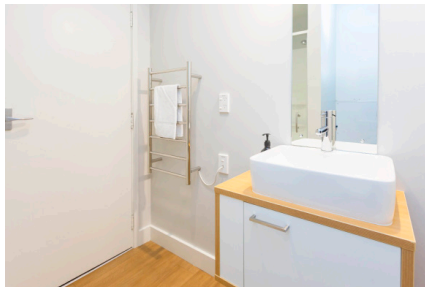
## **OTHER AMENITIES AVAILABLE:**

- On-site YMCA gym (membership additional cost)
- Card operated laundry
- On-site car parking (POA)

**\$135.00 INC GST  
PER NIGHT**



# STUDIO APARTMENT



Our single, open plan studio apartment is popular for guests looking for a motel style experience and complete privacy.

The apartment features a queen bed, ensuite bathroom and kitchenette. Relax in your own private space with a view overlooking the campus.

The perfect self-contained room for your stay!

## **FEATURES:**

- Beds: 1 queen bed
- Occupancy: 2
- Room size: 25m<sup>2</sup>

## **TOTAL ROOMS TO HIRE:**

1 x queen room available

## **FACILITIES INCLUDE:**

- Complimentary tea and coffee
- Freeview TV
- Free WiFi
- Room serviced daily
- Linen provided

## **OTHER AMENITIES AVAILABLE:**

- On-site YMCA gym (membership additional cost)
- Card operated laundry
- On-site car parking (POA)

**\$170.00 INC GST  
PER NIGHT**

## **DOUBLE ENSUITE APARTMENT**



Our double ensuite apartment is situated on the same floor as the king single ensuite rooms. It offers a king size bed that can be split into 2 king singles, giving guests the flexibility to customise their sleeping configuration.

Located on the same floor is a shared kitchenette with microwave and fridge.

### **FEATURES:**

- Beds: 1 king double bed
- Occupancy: 2
- Room size: 25m<sup>2</sup>

### **TOTAL ROOMS TO HIRE:**

1 x king double room available

### **FACILITIES INCLUDE:**

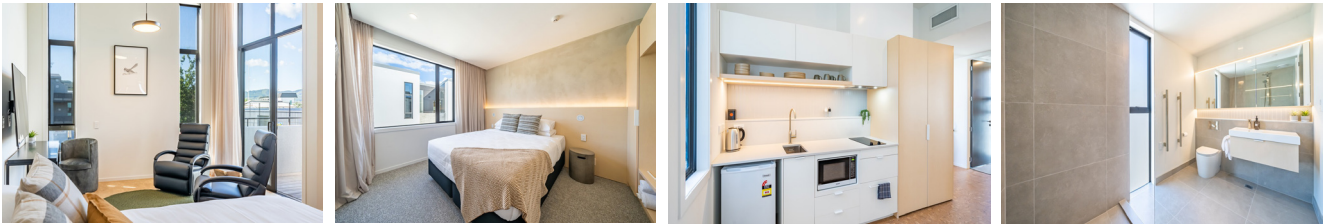
- Complimentary tea and coffee
- Freeview TV
- Free WiFi
- Room serviced daily
- Linen provided

### **OTHER AMENITIES AVAILABLE:**

- On-site YMCA gym (membership additional cost)
- Card operated laundry
- On-site car parking (POA)

**\$150.00 INC GST  
PER NIGHT**

# THE VILLAGE APARTMENTS



Our newly built village apartments provide the ultimate comfort and luxury for your stay away from home. Each apartment contains one main bedroom and one additional king bed in the open-plan living area which makes this an ideal option for travelling groups, teams, families & more!

## **FEATURES:**

- Beds: 2 king beds
- Occupancy: 4
- Room size: 56m<sup>2</sup> - 61m<sup>2</sup>

## **TOTAL ROOMS TO HIRE:**

50 x apartments, 25 of these are accessible.

## **FACILITIES INCLUDE:**

- Mini kitchen with a selection of hot beverages
- Sky TV
- Free WiFi
- Room serviced daily
- In-room washing machine and dryer
- Accessibility friendly rooms available
- Full height showers

## **OTHER AMENITIES AVAILABLE:**

- On-site YMCA gym (membership additional cost)
- Free on-site car parking

**\$320.00 INC GST  
PER NIGHT**





**CONTACT THE TEAM AT NZCIS FOR A QUOTE  
OR TO BOOK YOUR ACCOMMODATION.**

**EMAIL: [BOOKINGS@NZCIS.CO.NZ](mailto:BOOKINGS@NZCIS.CO.NZ)**

**PHONE: 021 246 3147**

**[WWW.NZCIS.CO.NZ](http://WWW.NZCIS.CO.NZ)**

